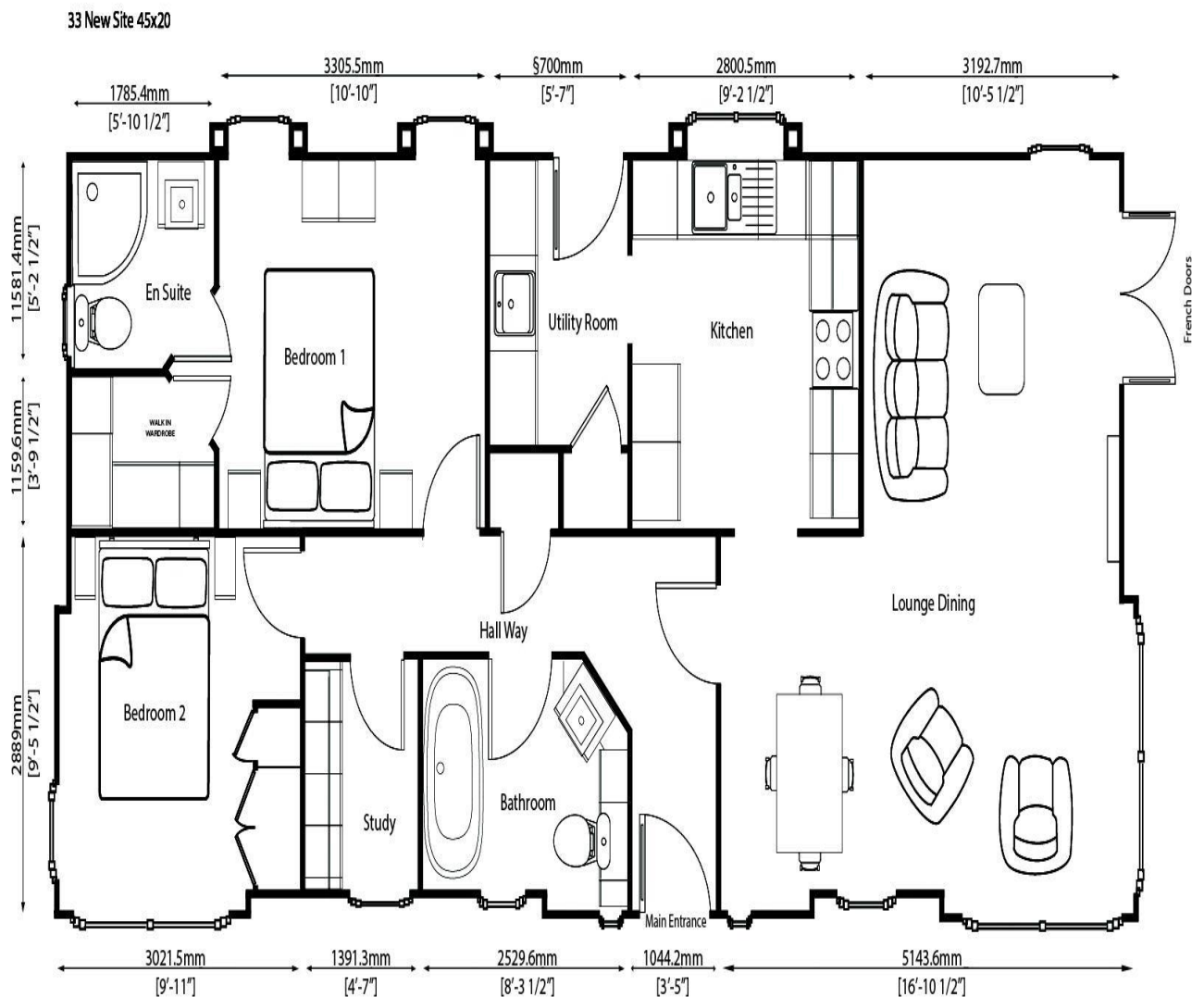




33 New Site Weybridge Park Estate Addlestone Surrey KT15 2RF

£355,000





Introducing the impressive Stately Albion Wentwood, a generously sized 45' x 20' home that perfectly balances expansive living areas with practical design. This residence is ideal for those seeking ample space, comfort, and a dedicated area for work or hobbies. The layout features a large, welcoming living room and an adjoining dining area, offering plenty of space for relaxation and entertaining guests. The home boasts a large kitchen designed for functionality, complemented by the added convenience of a dedicated utility room, keeping the main living areas clutter-free. The home includes two spacious double bedrooms designed for comfort and style. The master suite benefits from the luxury of its own en-suite shower room and walk-in wardrobe. A valuable addition to the home is a private study, providing an ideal space for a home office or quiet retreat. The well-appointed main bathroom elevates everyday living with elegant ceiling-high mirrors and a feature roll-top bath, offering the perfect spot for a relaxing soak.



AGENTS NOTES: These details do not constitute any part of an offer or contract. In issuing them we do not have any authority to give any warranty or representation whatsoever in respect of this property. These details are provided without any responsibility on our part or the part of the vendors. No statements in these details are to be relied upon as representations of fact and purchasers should satisfy themselves by inspection or otherwise as to the accuracy of the statements contained therein.

Equipment: We have not tested the equipment or central heating system mentioned in these particulars and purchasers are advised to satisfy themselves as to their working order and condition.

Measurements: Great care is taken when measuring but measurements should not be relied upon for ordering carpets, equipment, etc.